



Cutting | Bending | Welding | Automation



# T Serise Three-chuck

✦ Three-chuck Heavy-duty Tube Laser Cutting Machine ✦

## Company Culture

### MISSION

Intelligent manufacturing changes future

### VALUES

Customer-focused and employee-based

### VISION

Become a respectable enterprise in the global metal forming equipment field

## Company Profile



**13**

Global Branches



**100+**

Countries Covered



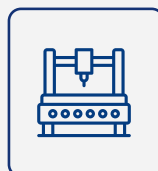
**4**

Manufacturing Bases



**30+**

Global Service Outlets



**8,000+**

Delivery Capability



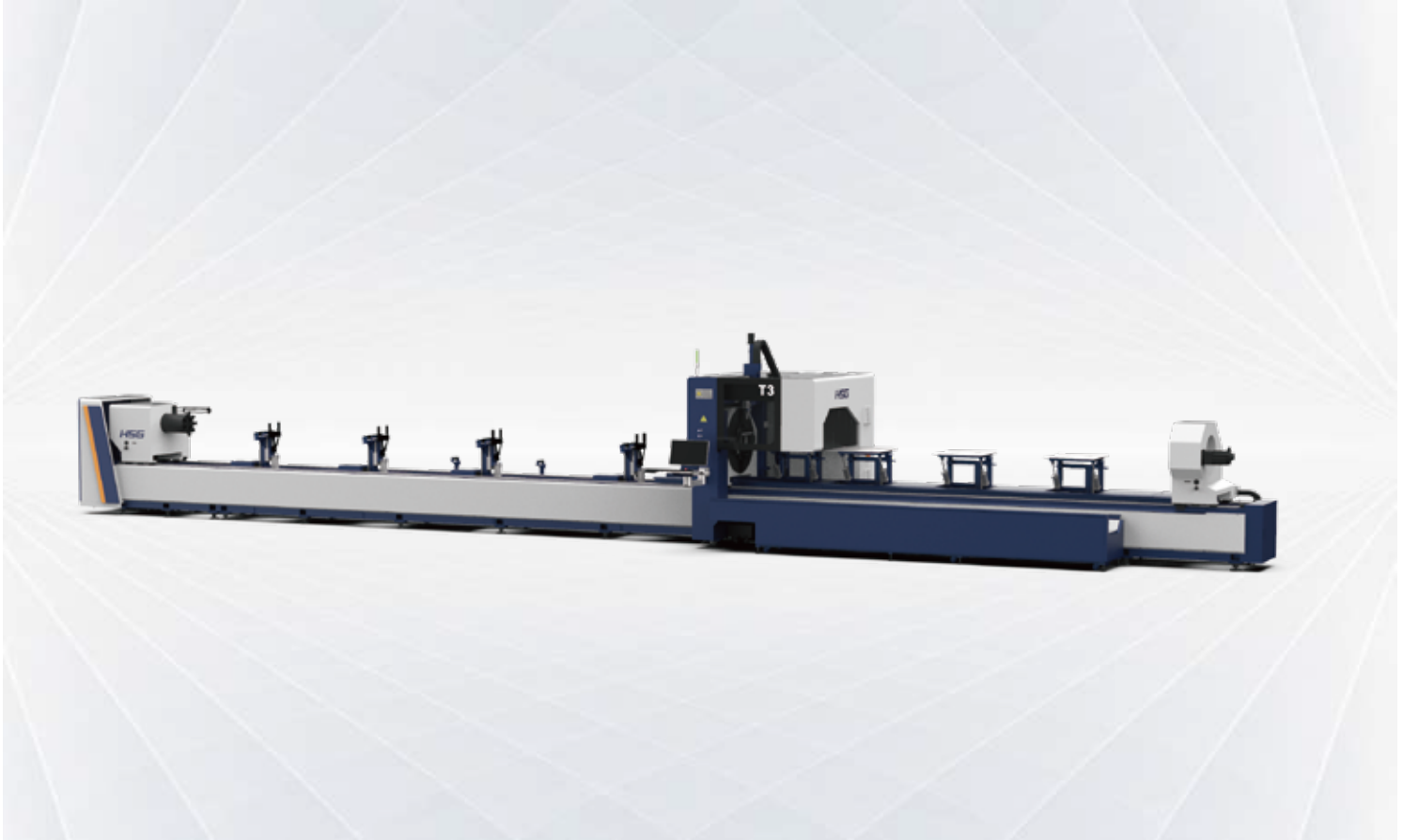
**96,000m<sup>2</sup>**

Production Base



# T Serise Three-chuck 3000-6000W

## Three-chuck Heavy-duty Tube Laser Cutting Machine



### Technical Parameters

Technical Parameter	T2	T3
Power	3000-6000W	3000-6000W
Max. Linkage Speed	100m/min	80m/min
Rotating Speed of Chucks	100r/min	80r/min
Max. Linkage Acceleration	1G	0.8G
X/Y-axis Positioning Accuracy	±0.03mm/m	±0.05mm/m
X/Y-axis Repositioning Accuracy	±0.03mm	±0.03mm
*Tailing Length	0mm	0mm
Cutting Capacity	Round tubeΦ20 - Φ240mm Square tube□20*20 - □240*240 Rectangular diagonal≤330mm	Round tubeΦ20 - Φ350mm Square tube□20*20 - □350*350mm side: 20-350mm
Weight of Single Tube	300kg	600kg
Overall Dimensions(L*W*H) with Loading Racks	16950*5000*3000mm	19000*5000*3000mm

\*Only when the nesting material is reasonable can be achieved.

\* Machine appearance, technical parameters, function description, data comparison shown in this page are from HSG in-house laboratory.  
All testing results and experimental data shall be subject to real machine.

## High-precision Cutting With Independent Servo Follow-up Support

- 9m loading machine bed is equipped with independent and high-sensitivity servo follow-up support for strong support to heavy tubes, satisfying highly precise cutting on the horizontally.
- 6m unloading machine bed is also equipped with independent servo follow-up support, combining with intelligent unloading model of the system to achieve smooth blanking of tubes up to 6 meters.



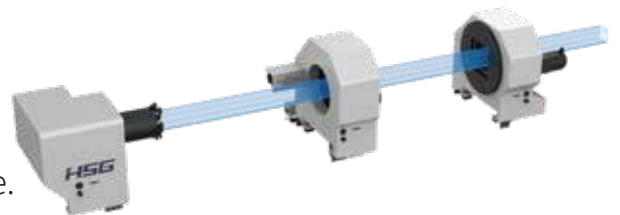
## Intelligent Bus Operating System

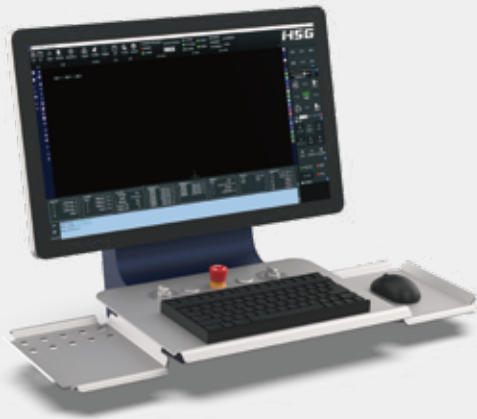
- Various auxiliary functions of tube laser cutting machines to satisfy multiple processing demand
- T2 series is equipped with professional nesting software to achieve efficient management of production progress and price calculations.



## Movable Triple Chuck for High Load Capacity

- The R2 is equipped with square and round chucks as standard, with a load capacity of 600kg, supporting 20-350mm tubes.
- Adopt two front and one rear chuck combination to achieve higher load bearing.
- C3 is a hollow chuck, which is easy to cut the whole tube.
- Movable three-chuck structure with short tail material cutting of chuck jump
- Optional Rectangular-circle professional sealing chuck, greatly increase the load capacity of the chuck to 800Kg.





## HSG-X Bus Control System

- HSG-X control system is bus-based and developed by HSG Laser. With intelligent and easy-to-operate service, it can offer users effective solutions to address problems of difficult operation, low efficiency and high costs.



## Tube Splicing Technology

- The operating control offers 50+ kinds of tube splicing patterns, for convenience of subsequent welding, such as splicing of male and female head of square tube, 90° arc splicing, splicing of round tube tee, splicing of cut-through holes, 45° splicing of hexagon, splicing of angle iron and channel steel, etc.

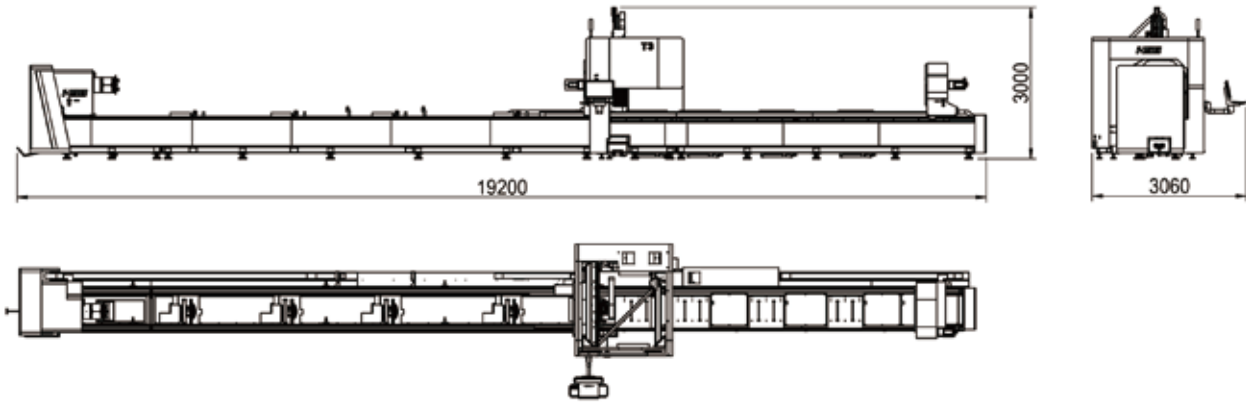


## Multi-functional Loading Rack for Fast Loading (Optional)

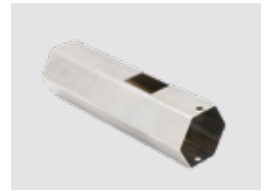
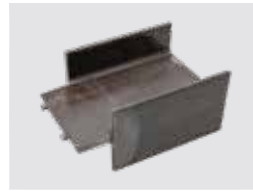
- Optional multifunctional loading frame can fulfill the automatic loading of 6-9 meters round tube, square tubes, steel sections and other tubes, achieving rapid loading of tubes, saving labor costs and improve productivity.

## Machine Foundation

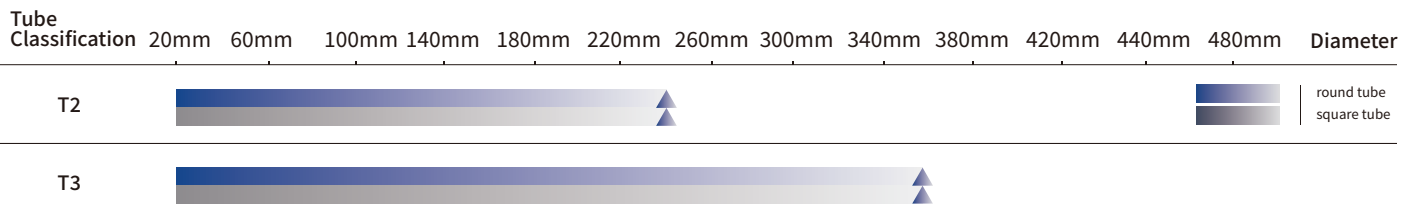
\*The marked size has about 10mm error  
\*Model: T3



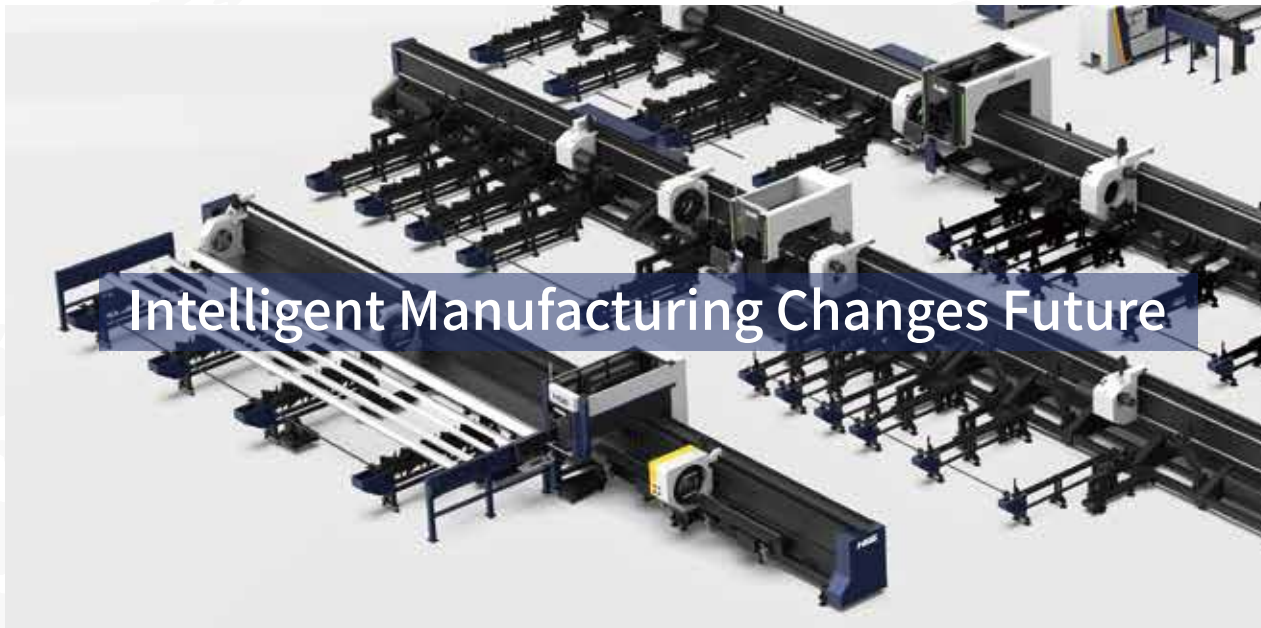
## Cutting Samples



## Cutting Capacity



The actual machines shall prevail and above data & pictures are only for reference.



## Intelligent Manufacturing Changes Future



**As a global enterprise, HSG sticks to providing professional and convenient service support to customers at home and board**



### Professional Training

Multiple technical training service and free operation training for customers and dealers in time



### Efficient Support

Humanistic service model, online services and 7\*24 hotline to offer solutions and assistance



### Optimized Transport

Multi-channel transport solutions and professional transport solution team will provide various transport cases for to satisfy the demand of customers and save transports fees



### Sufficient Accessories

Highly efficient accessories delivery service, multiple network inventory jointly responds to accessories demand to shorten customer's waiting times and accelerate production



### Careful Services

Domestic door-to-door service and free proofing, global 100+dealers provide efficient and convenient services



Intelligent Manufacturing Changes Future



Website



Facebook



Youtube

Headquarters Add.: No. 4, Anye Road, Shunjiang Community Industrial Park,  
Beijiao Town, Shunde District, Foshan, Guangdong, China  
Website: [www.hsglaser.com](http://www.hsglaser.com)  
Email: [info@hsglaser.com](mailto:info@hsglaser.com)  
Tel: +86 757-66833906