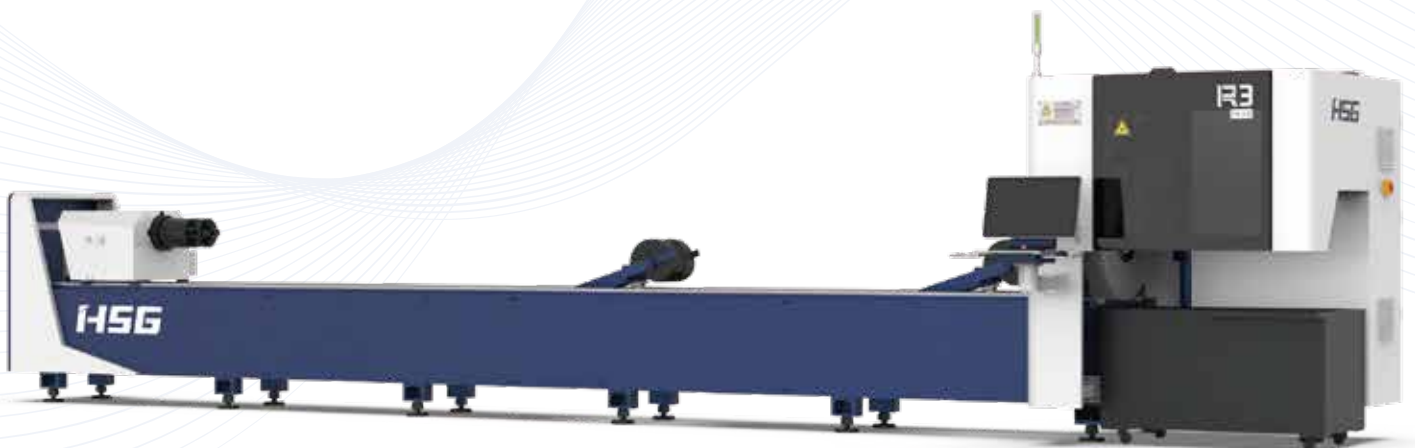




Cutting | Bending | Welding | Automation



R Series

✦ Double Chucks Economical Tube Laser Cutting Machine ✦

Company Culture



MISSION

Intelligent manufacturing changes future



VALUES

Customer-focused and employee-based



VISION

Become a respectable enterprise in the global metal forming equipment field

Company Profile



13

Global Branches



100+

Countries Covered



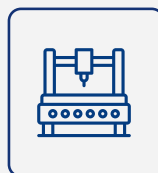
4

Manufacturing Bases



30+

Global Service Outlets



8,000+

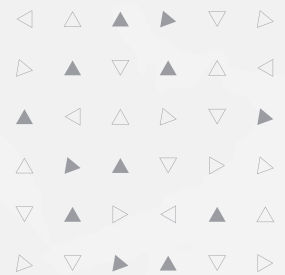
Delivery Capability



96000m²

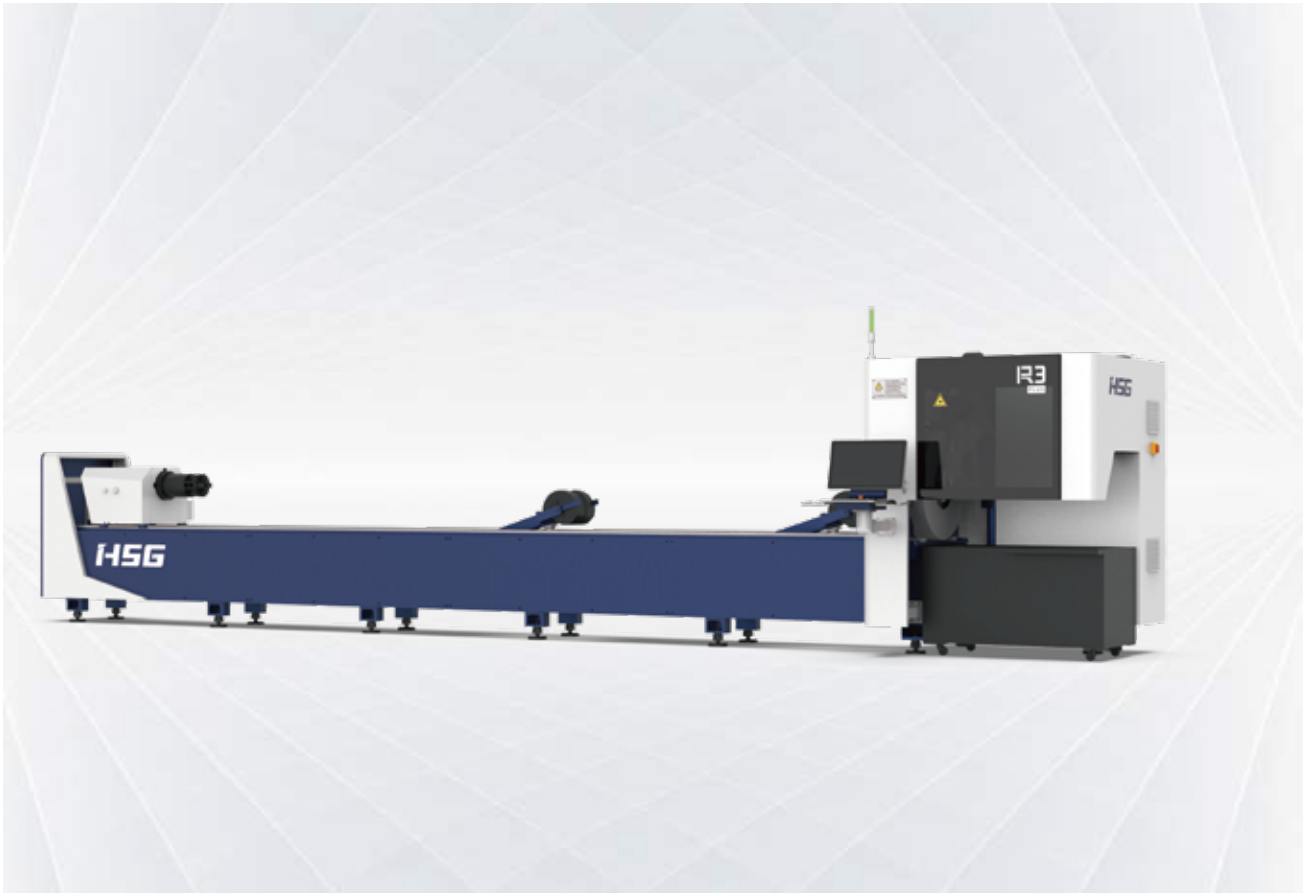
96,000m²

Occupied Area



R Series 1500-6000W

Double Chucks Economical Tube Laser Cutting Machine



Technical Parameters

Technical Parameter	R3	R3 PLUS	R5
Power	1500-6000W	1500-6000W	3000-6000W
Rotating Speed of Chucks	90r/min	90r/min	100r/min
No-load Speed	90m/min	90m/min	100m/min
Acceleration	0.8G	0.8G	1G
X/Y-axis Positioning Accuracy	±0.05mm/m	±0.05mm/m	±0.05mm/m
X/Y-axis Repositioning Accuracy	±0.03mm	±0.03mm	±0.03mm
*Tailing Length	Tailings in Single Chuck Clamping Model ≥85mm Tailings in Double-chuck Clamping Model ≥225mm	Tailings in Single Chuck Clamping Model ≥85mm Tailings in Double-chuck Clamping Model ≥260mm	Tailings in Single Chuck Clamping Model ≥85mm Tailings in Double-chuck Clamping Model ≥180mm
Cutting Capacity	Round tube φ20-φ219mm Square tube □20*20-150*150mm Rectangular diagonal ≤219mm	Round tube φ20-φ325mm Square tube □20*20-230*230mm Rectangular diagonal ≤325mm	Round tube φ20-φ240mm Square tube □20*20-240*240mm Side: 20-240mm
Weight of Single Tube	150kg	200kg	200kg
Overall Dimensions(L*W*H) with Loading Racks	10000*2260*2350mm	10000*2260*2350mm	10000*2260*2350mm

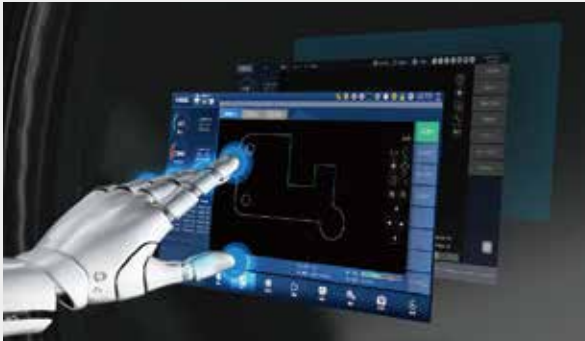
*Suggested Tube Length in Single Chuck Clamping ≤500mm, Weight of Tube ≤5kg.

* Machine appearance, technical parameters, function description, data comparison shown in this page are from HSG in-house laboratory.

All testing results and experimental data shall be subject to real machine.

High Speed and Intelligent for Better Processing

- High Speed and Precise
High-speed data transmission without time delay and strong positional energy control.
- High rotational Speed and Air Velocity
Bus system and servo motor reduce unproductive time.

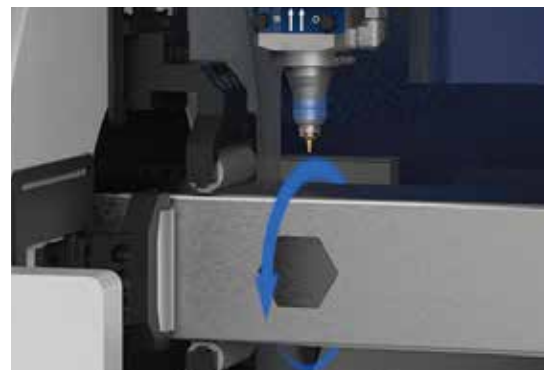


X9000 Bus-based Tube Cutting Control System

- Simple Interface
Clear interface is convenient for users operating and shows cutting data in real time to save time and costs.
- Functional Integration Control
A number of core functions are showed centrally on the interface to reduce operating steps and users can easily learn to operate.

Leapfrog Technique And Flying Cutting Technique

- Peculiar tube cutting techniques make tube cutting more smooth.



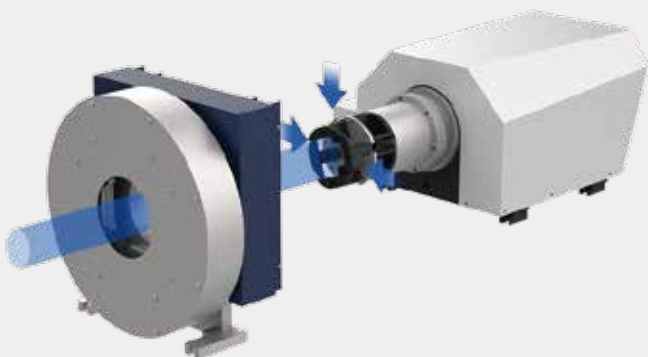
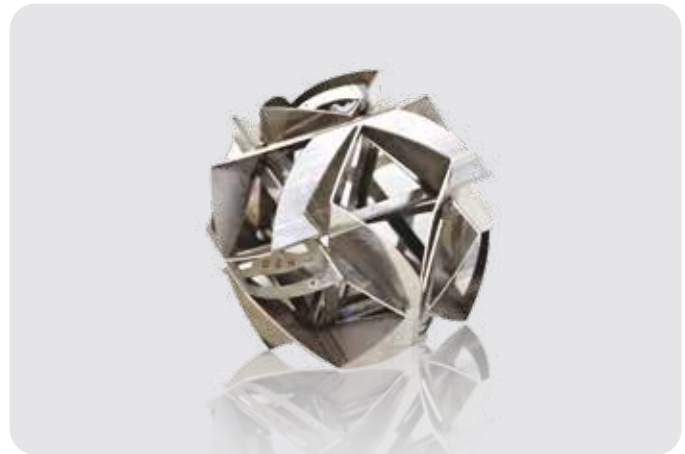


Powerful Functions Make You Never Spent Time Worrying

- Component Real-time Monitoring and Maintenance Alert
All components are detected in real time to ensure the stable use and the system is equipped with maintenance alert for careful component management.

Tube Splicing Technology

- The operating control offers 50+ kinds of tube splicing patterns, for convenience of subsequent welding, such as splicing of male and female head of square tube, 90° arc splicing, splicing of round tube tee, splicing of cut-through holes, 45° splicing of hexagon, splicing of angle iron and channel steel, etc.

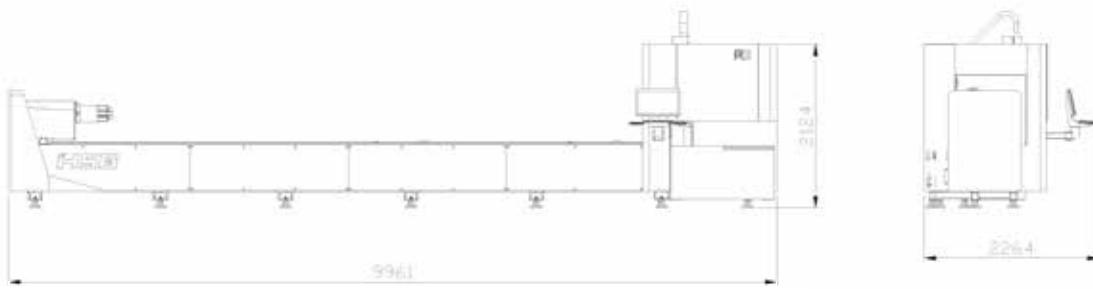


Automatic Pneumatic Double Chucks

- Automatic centering the chucks.
- Pneumatic chuck clamping with large clamping force.

Machine Foundation

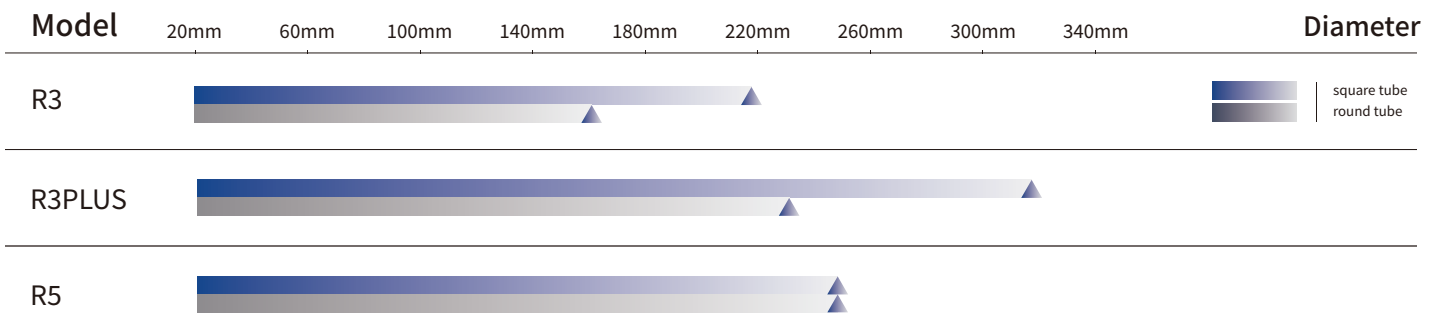
*The marked size has about 10mm error
 *Pictures of R3 are for reference only and subject to actual dimensions.



Cutting Samples



Cutting Capacity



The actual machines shall prevail and above data & pictures are only for reference.



Intelligent Manufacturing Changes Future



As a global enterprise, HSG sticks to providing professional and convenient service support to customers at home and board



Professional Training

Multiple technical training service and free operation training for customers and dealers in time



Efficient Support

Humanistic service model, online services and 7*24 hotline to offer solutions and assistance



Optimized Transport

Multi-channel transport solutions and professional transport solution team will provide various transport cases for to satisfy the demand of customers and save transports fees



Sufficient Accessories

Highly efficient accessories delivery service, multiple network inventory jointly responds to accessories demand to shorten customer's waiting times and accelerate production



Careful Services

Domestic door-to-door service and free proofing, global 100+dealers provide efficient and convenient services



Intelligent Manufacturing Changes Future



Website



Facebook



Youtube

Headquarters Add.: No. 4, Anye Road, Shunjiang Community Industrial Park,
Beijiao Town, Shunde District, Foshan, Guangdong, China
Website: www.hsglaser.com
Email: info@hsglaser.com
Tel: +86 757-66833906