



Cutting | Bending | Welding | Automation



GV

✦ Pilot Series 6G All Linear Motor Fiber Laser Cutting Machine ✦

Company Culture



MISSION

Intelligent manufacturing changes future



VALUES

Customer-focused and employee-based



VISION

Become a respectable enterprise in the global metal forming equipment field

Company Profile



13

Global Branches



100+

Countries Covered



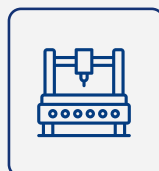
4

Manufacturing Bases



30+

Global Service Outlets



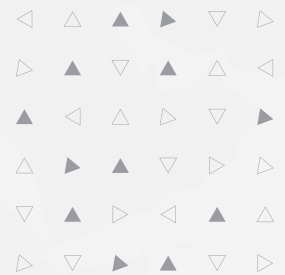
8,000+

Delivery Capability



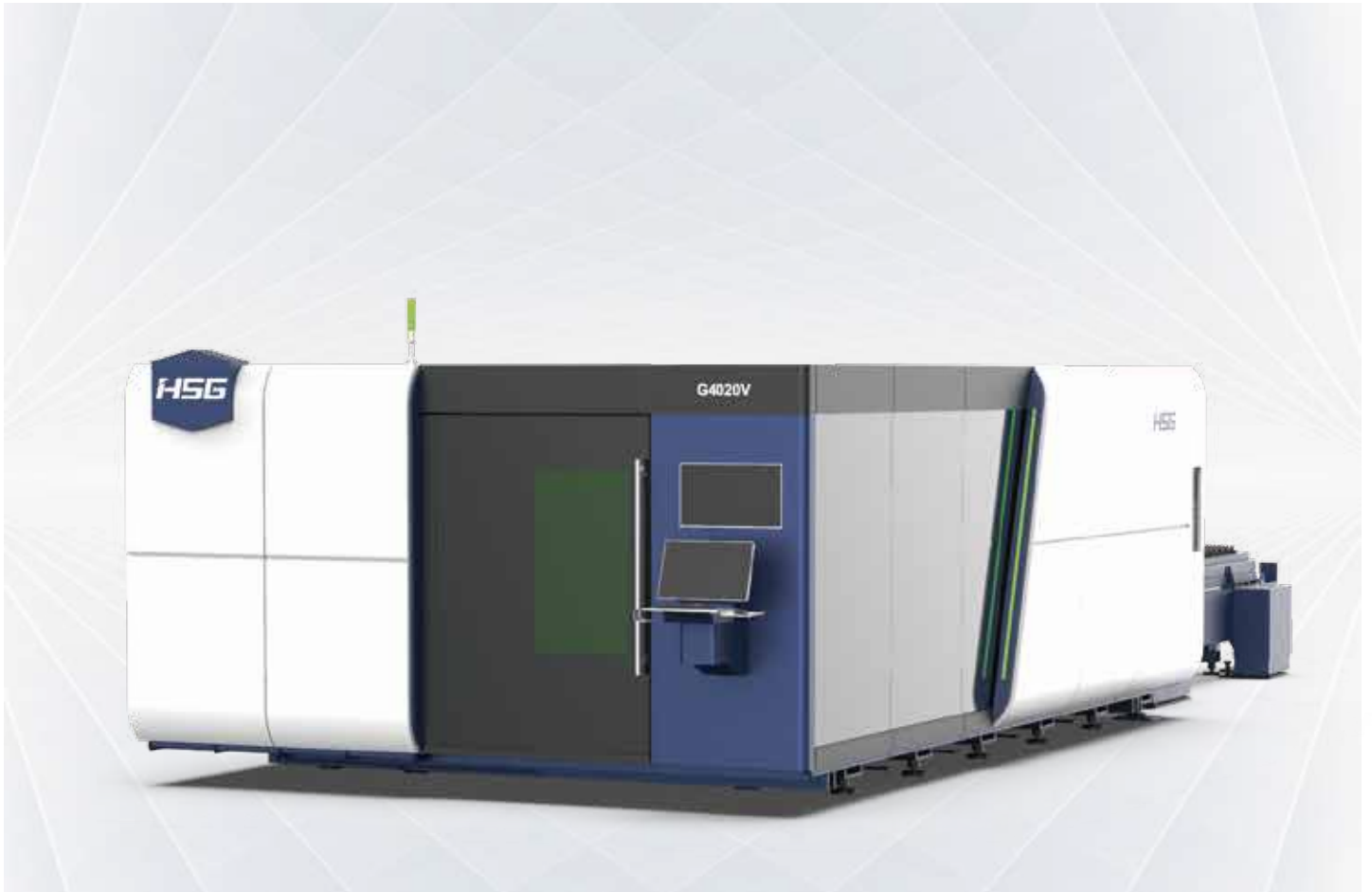
96,000m²

Production Base



GV 6000-60000W

Pilot Series 6G All Linear Motor Fiber Laser Cutting Machine



Technical Parameters

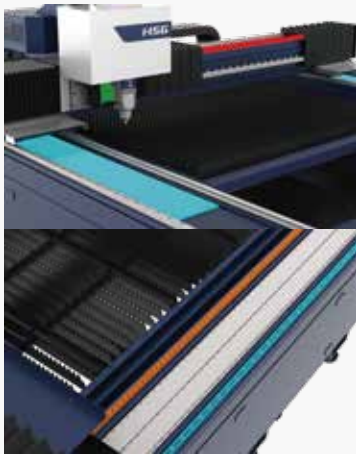
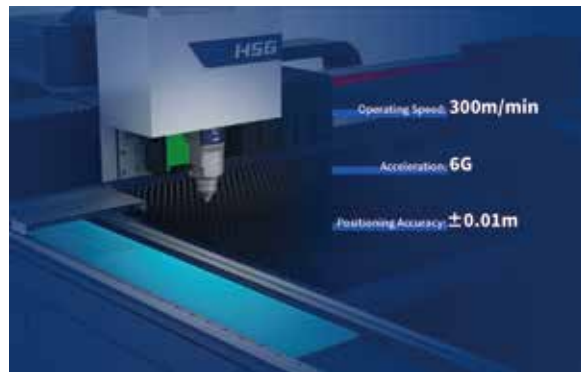
Technical Parameters	G4020V
Power	6000W-60000W
Processing format (L*W)	4064mm*2040mm
X/Y-axis positioning accuracy	$\pm 0.01\text{mm/m}$
X/Y-axis repositioning accuracy	$\pm 0.01\text{mm}$
Max. Linkage Speed	300m/min
Max. Linkage Acceleration	6G

* Machine appearance, technical parameters, function description, data comparison shown in this page are from HSG in-house laboratory. All testing results and experimental data shall be subject to real machine.

▶

Highly Dynamic Performance

- Operating Speed: 300m/min
- Acceleration: 6.0G
- Positioning Accuracy: $\pm 0.01\text{m}$



▶

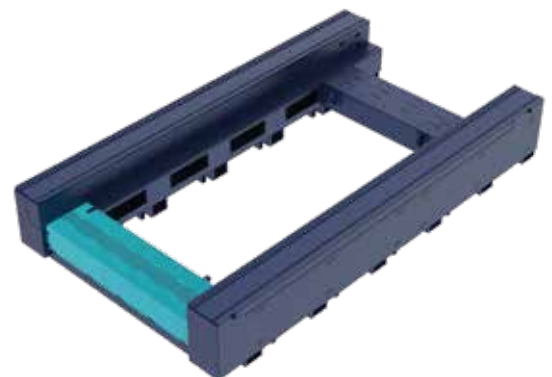
High-load Double Rails Structure Assists Stable Processing

- GV Series selects German rails which both roller guider and measuring guider can provide stable and reliable processing for users. Double rails with high load, rigidity, dust prevention and waterproofing can achieve waterproof level to IP67.

▶

Special Machine Bed for High Power

- The machine bed is welded with a number of ultra-thickness sheets. The machine bed is designed in special hollow structure. There is no bed link at the bottom of the laser cutting area, and the bed is not easy to be affected by heat, which is stable and durable.





Scientific Configurations Build High-load and Eco-friendly Processing

- GV Series applies professional German hydraulic station to make work station with higher load capacity.
- Equipped with scientific dust removal system, GV Series can be easy to process sheets environmentally. The two sides of the following zoned ventilation, following the cutting position to open the dampers independently, to ensure that the cutting area of the optimal ventilation effect.



Numerous Useful Functions , Easy Operation

- The GV comes with a variety of machining functions to assist the operator in easy machining optionally.
- Automatic loading and unloading and material tower
- Automatic nozzle replacement
- Center control system
- Visual edge finding
- Visual residual material



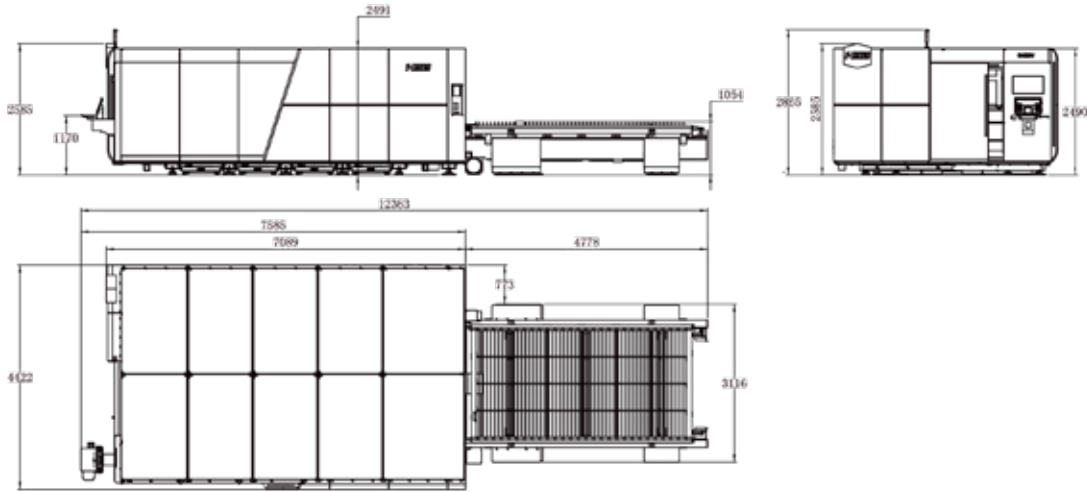
High-speed Dynamics for Luxury Cutting Experiences

- GV Series matches with professional and advanced triaxial linear motor, which is characterized by super high speed, acceleration, repeatability and other advantages. The ultimate dynamic performance with micron-size precision of machine bed to create luxury cutting experiences.



Machine Foundation

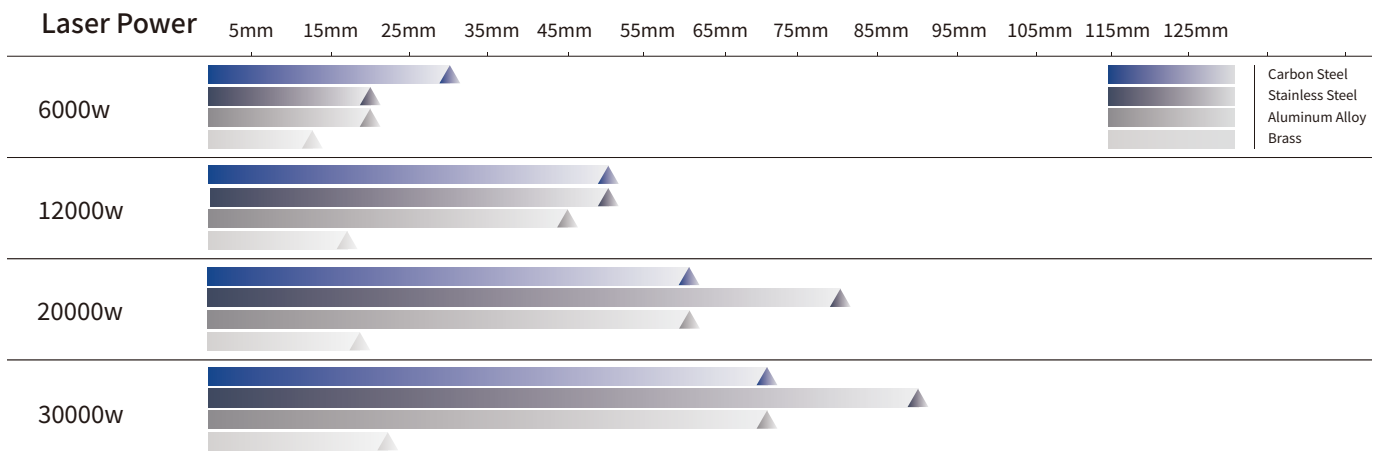
*The marked size has about 10mm error



Cutting Samples



Cutting Capacity



The actual machines shall prevail and above data & pictures are only for reference.



Intelligent Manufacturing Changes Future



As a global enterprise, HSG sticks to providing professional and convenient service support to customers at home and board



Professional Training

Multiple technical training service and free operation training for customers and dealers in time



Efficient Support

Humanistic service model, online services and 7*24 hotline to offer solutions and assistance



Optimized Transport

Multi-channel transport solutions and professional transport solution team will provide various transport cases for to satisfy the demand of customers and save transports fees



Sufficient Accessories

Highly efficient accessories delivery service, multiple network inventory jointly responds to accessories demand to shorten customer's waiting times and accelerate production



Careful Services

Domestic door-to-door service and free proofing, global 100+dealers provide efficient and convenient services



Intelligent Manufacturing Changes Future



Website



Facebook



Youtube

Headquarters Add.: No. 4, Anye Road, Shunjiang Community Industrial Park,
Beijiao Town, Shunde District, Foshan, Guangdong, China
Website: www.hsglaser.com
Email: info@hsglaser.com
Tel: +86 757-66833906